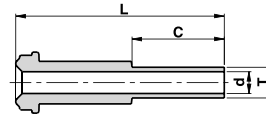


GL-W

LONG GLAND

Without shoulder

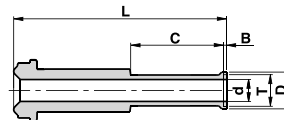


Ordering Information	Face Seal Size	L		C		d		T Tube O.D	W.T.	
		inch	mm	inch	mm	inch	mm		inch	mm
V-GL-1/8-W	1/8	36.1	1.42	19.1	0.75	1.9	0.07	1/8"	-	0.028
V-GL-1/4 X 1/8-W	1/4	36.1	1.42	19.1	0.75	1.9	0.07	1/8"	-	0.028
V-GL-1/4-W	1/4	43.2	1.70	19.1	0.75	4.6	0.18	1/4"	-	0.035
V-GL-3/8-W	1/2	45.5	1.79	19.1	0.75	7.7	0.30	3/8"	-	0.035
V-GL-1/2-W	1/2	45.5	1.79	19.1	0.75	10.2	0.40	1/2"	-	0.049
V-GL-1/2-W 1.41	1/2	35.8	1.41	9.6	0.38	10.2	0.40	1/2"	-	0.049
V-GL-1/2-W W.T.=0.065	1/2	45.5	1.79	19.1	0.75	9.5	0.37	1/2"	-	0.065
V-GL-1/2 X 1/4-W	1/2	45.5	1.79	19.1	0.75	4.6	0.18	1/4"	-	0.035
P-GL-3/4-W W.T.=0.049	3/4	51.6	2.03	19.1	0.75	16.6	0.65	3/4"	-	0.049
P-GL-3/4-W W.T.=0.065	3/4	51.6	2.03	19.1	0.75	15.8	0.62	3/4"	-	0.065
P-GL-1-W W.T.=0.065	1	58.9	2.32	19.1	0.75	22.1	0.87	1"	-	0.065
V-GL-6MM-W	1/4	43.2	1.70	19.1	0.75	4.0	0.16	6mm	1.00	-
V-GL-8MM-W	1/4	43.2	1.70	19.1	0.75	6.0	0.24	8mm	1.00	-
V-GL-10MM-W	1/2	45.5	1.79	19.1	0.75	8.0	0.31	10mm	1.00	-
V-GL-12MM-W	1/2	45.5	1.79	19.1	0.75	10.0	0.39	12mm	1.00	-
P-GL-18MM-W	3/4	51.6	2.03	19.1	0.75	15.0	0.59	18mm	1.50	-

GL-S

LONG GLAND

With shoulder



Ordering Information	Face Seal Size	L		C		d		B		D		T Tube O.D	W.T.	
		inch	mm	inch	mm	inch	mm	inch	mm	inch	mm		inch	mm
V-GL-1/4-S	1/4	43.7	1.72	19.1	0.75	4.6	0.18	0.6	0.02	7.4	0.29	1/4"	-	0.035
V-GL-3/8-S	1/2	46.2	1.82	19.1	0.75	7.7	0.30	0.8	0.03	10.4	0.41	3/8"	-	0.035
V-GL-1/2-S	1/2	46.5	1.83	19.1	0.75	10.2	0.40	1.0	0.04	14.0	0.55	1/2"	-	0.049
V-GL-1/2-S W.T.=0.065	1/2	46.5	1.83	19.1	0.75	9.5	0.37	1.0	0.04	14.0	0.55	1/2"	-	0.065
P-GL-3/4-S W.T.=0.049	3/4	52.6	2.07	19.1	0.75	16.6	0.65	1.0	0.04	20.3	0.80	3/4"	-	0.049
P-GL-3/4-S W.T.=0.065	3/4	52.6	2.07	19.1	0.75	15.8	0.62	1.0	0.04	20.3	0.80	3/4"	-	0.065
P-GL-1-S W.T.=0.065	1	65.3	2.57	19.1	0.75	22.1	0.87	1.0	0.04	26.9	1.06	1"	-	0.065
V-GL-6MM-S	1/4	43.7	1.72	19.1	0.75	4.0	0.16	0.5	0.02	7.0	0.27	6mm	1.00	-
V-GL-8MM-S	1/4	46.2	1.82	19.1	0.75	6.0	0.24	0.8	0.03	8.9	0.35	8mm	1.00	-
V-GL-10MM-S	1/2	46.2	1.82	19.1	0.75	8.0	0.31	0.8	0.03	10.9	0.43	10mm	1.00	-
V-GL-12MM-S	1/2	46.5	1.83	19.1	0.75	10.0	0.39	1.0	0.04	13.2	0.52	12mm	1.00	-
P-GL-18MM-S	3/4	52.6	2.07	19.1	0.75	15.0	0.59	1.0	0.04	19.3	0.76	18mm	1.50	-

Dimensions are for reference only, and are subject to change without notice.

When ordering, be sure to add the Surface-Finish Designator (either H or E) to the Part Number. (See Material Table, page 157).